

Canon

 **Color
imageRUNNER**
LBP5480

 **imageRUNNER**
LBP3580
LBP3480

desktop productivity
networked
colour and black and white

OFFICE SOLUTIONS



meap

At-a-Glance



**Color imageRUNNER
LBP5480**



**imageRUNNER
LBP3580**



**imageRUNNER
LBP3480**

Specifications

	Color imageRUNNER LBP5480	imageRUNNER LBP3580	imageRUNNER LBP3480
Print Speed	Up to 33/33 ppm (monochrome/colour, letter)	Up to 42 ppm (monochrome, letter)	Up to 35 ppm (monochrome, letter)
Resolution	Up to 600 x 600 dpi	Up to 600 x 600 dpi	Up to 600 x 600 dpi
Print Drivers	Standard: UFR II, PCL 5c/6, Adobe® PostScript® 3™	Standard: UFR II, PCL 5e/6, Adobe PostScript 3	Standard: UFR II, PCL 5e/6, Adobe PostScript 3
Paper Sizes	Up to Legal (8-1/2" x 14")	Up to Legal (8-1/2" x 14")	Up to Legal (8-1/2" x 14")
Paper Capacity	Standard: Up to 600 Sheets Maximum: 1,100 Sheets	Standard: Up to 500 Sheets Maximum: 1,600 Sheets	Standard: Up to 300 Sheets Maximum: 800 Sheets
Secure Print	Optional	Optional	Optional
MEAP® Support	Yes	Yes	Yes
Mobile Print Support	Yes	Yes	Yes

Note: For more details, please refer to product specifications beginning on page 10.

imageRUNNER Performance for Desktop Productivity

Uncompromising output in four impressive workgroup laser printers

When you need a high-quality printing solution for desktop and workgroup document production, the Canon imageRUNNER® LBP Series of laser printers delivers. With these models you'll get fast output speeds, support for PCL and PostScript, energy efficiency, simplified operation and maintenance.

The imageRUNNER LBP Series delivers the productivity and reliability you demand from one of the world's most respected names in document imaging.

Powered by innovative technology

The imageRUNNER LBP Series benefits from innovations refined over decades of Canon's leading research and development. Many of the same technologies that enable high-quality prints and productivity in the renowned imageRUNNER ADVANCE and imageRUNNER line of MFPs power the Canon imageRUNNER LBP Series. Never again will you need to sacrifice speed, integration, or management capabilities when choosing a desktop laser printer for your office.

Impressive collaboration

Canon's new generation of LBP Series printers integrate with your Canon MFPs better than ever for an outstanding fleet solution. Innovative device communications allow you to automatically route faxes from your Canon MFPs to your LBP printer. Canon's MEAP technology brings MFP workflows to your desktop as well, maximizing your efficiency. Print anywhere technology lets you send from your mobile device and retrieve jobs from any printer on the network. And with the same administrative technology found in imageRUNNER ADVANCE MFPs, you can manage your LBP printers with even greater ease.

Canon's environmental commitment

Canon's commitment to protecting and helping sustain the environment is stronger than ever. To help preserve resources and prevent waste, one of Canon's many environmental programs includes free return of spent cartridges to its state-of-the-art recycling facility. New imageRUNNER LBP models incorporate environmentally responsible technologies that further conserve energy and resources, reduce CO₂ emissions, and help prevent pollution throughout the entire product life cycle.

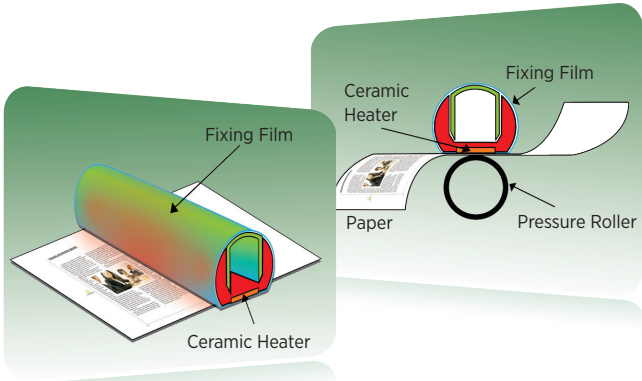


Advanced technology for extraordinary documents

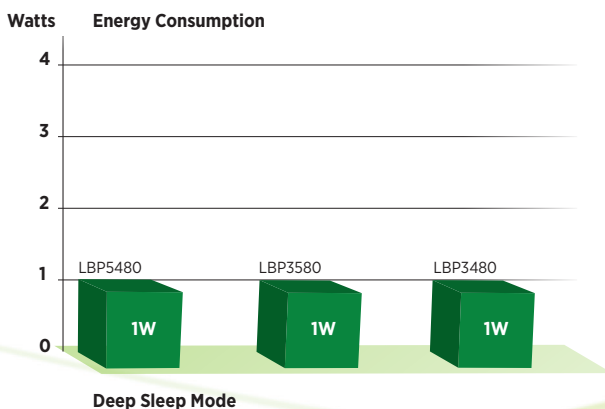
Canon printing innovations for peak performance

The imageRUNNER LBP Series delivers the desktop productivity and advanced technology users demand in three compact models. The Color imageRUNNER model utilizes robust, four-drum engine technology and Canon's patented Color RAPID Fusing System to quickly produce beautiful colour and monochrome documents. The black-and-white imageRUNNER LBP models use the patented RAPID Fusing System to output crisp monochrome documents at high speeds while also reducing energy consumption.

RAPID Fusing System Technology



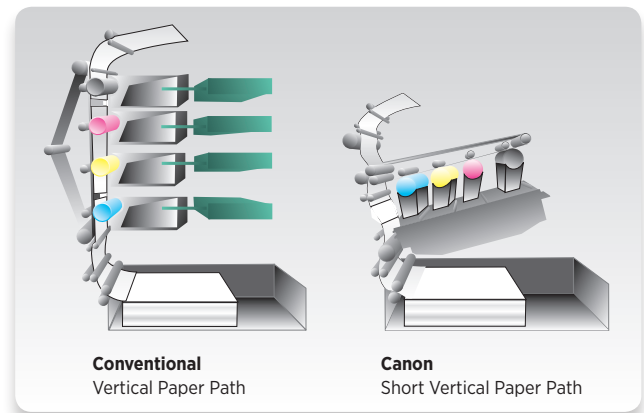
Canon's imaging innovations have virtually no warm-up time and deliver fast printout times with less heat. Each LBP model is ENERGY STAR® qualified and helps reduce total cost of ownership with low power use, especially when in Standby Mode. Power usage in Deep Sleep Mode is an incredibly low 1W across the range of models.*



* See specifications starting on page 10 for individual model power usage.

The imageRUNNER LBP Series is derived from the same high-performance system architecture developed for Canon's imageRUNNER ADVANCE MFP line, delivering extraordinary productivity, robust functionality, and enhanced processing capacity. The compact size and fast first-print times of the Color imageRUNNER LBP5480 model is realized through a revolutionary short vertical paper path design, giving you an advanced printer without having to compromise on office space.

Efficient output performance



Remarkable image quality

The documents you print represent your business. So whether you're printing a customer's invoice or the big sales pitch, your output needs to be at its best.

Canon's decades of innovation and research mean you get remarkable image quality page after page. Canon's proprietary Advanced Smoothing Technology (AST) enhances image quality by smoothing the edges of printed text and graphics. With efficient engine resolutions of 600 dpi, Canon's print technology delivers output with the appearance of 9600 x 600 dpi output for the Color imageRUNNER LBP5480. The monochrome models also benefit from Canon's imaging expertise, with the imageRUNNER LBP3580 and LBP3480 delivering prints equivalent to 1200 x 1200 dpi and 2400 x 600 dpi, respectively.

imageRUNNER productivity features

Advanced print features

With the ubiquity of USB memory media, Canon makes it simple to print common file types without a computer. Each imageRUNNER LBP model supports printing of PDF, TIFF, JPEG, and XPS files directly from USB memory media via a convenient, front-mounted USB 2.0 Hi-Speed port. The imageRUNNER LBP Series can also print these file types, plus PS/EPS files, from a computer through the Remote UI utility—without installing print drivers. Users can even print e-mails and attached images by sending them to either the printer IP address or a dedicated e-mail account that's been configured specifically for the device.* This enables guest users to output documents easily or print them remotely. Direct printing via FTP is also supported.



Mobile cloud printing

Front USB port for memory media

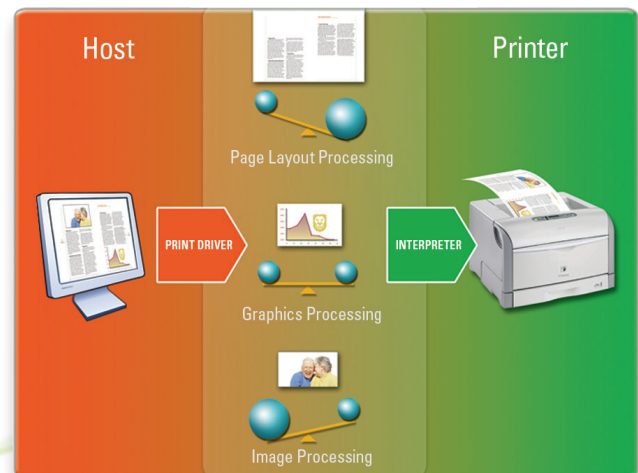
On the go

Canon also answers the call to print anywhere, anytime from mobile devices and the cloud. The Canon Mobile Printing app increases productivity by allowing users to send print jobs—including Microsoft® Office files—from their smartphones and tablets via a wireless network.** Canon's uniFLOW Mobile and Cloud Printing solution adds multiple job release options, Web portals, advanced job accounting, secure printing, and release from cloud-based storage systems.***

Optimized document processing

The embedded print controller on all models in the imageRUNNER LBP Series supports three print languages as standard for exceptional business compatibility and comes with ample memory for fast output without delay. For standard business applications, use PCL 5/6. For graphic-centric workflows and advanced colour rendering, choose the Adobe PostScript 3 driver. And because genuine Adobe PostScript is used, you'll enjoy truer rendering of colours and graphics versus emulated PostScript. Canon's innovative UFR II print technology is also standard on each model.

When users print a document, the intelligent UFR II driver architecture determines the optimal balance of processing between the desktop computer and the printer by analyzing the layout and graphic components of each page. This unique approach maintains exceptionally high print performance on even complex documents that include images, graphics, and text.



UFR II Printing Technology

* Requires optional SD Card.

** Currently supports Apple® devices running iOS 5.1 or higher. For Android™ support, check with your Canon Authorized Dealer or Android Market.

*** Requires uniFLOW server software and optional uniFLOW components.

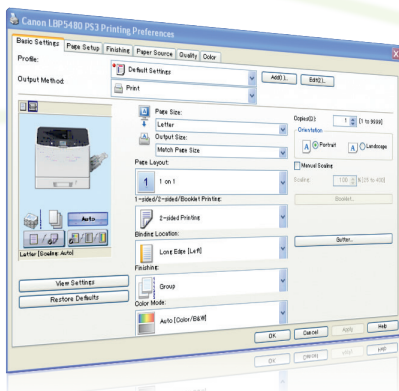
Robust support for advanced workflows

Consistent imageRUNNER print driver architecture

Even with three standard print languages, printing is simple thanks to Canon's focus on an exceptional user experience. Each print driver uses a nearly identical graphical printer interface, so switching between drivers requires no additional training. This consistency extends even further, with a driver architecture that spans the entire line of imageRUNNER/imageRUNNER ADVANCE models. This simplifies and standardizes the task of producing documents for users and helps reduce training and help desk calls for IT staff. The drivers are compatible with Windows® and Macintosh® environments and provide support for UFR II, PCL, and Adobe PostScript 3 page description languages (PDL) to ensure high productivity.* Users can quickly switch between different PDLs based on the types of documents being produced. Booklets can also be easily produced using the auto-imposition feature and then finished offline.

Advanced application support

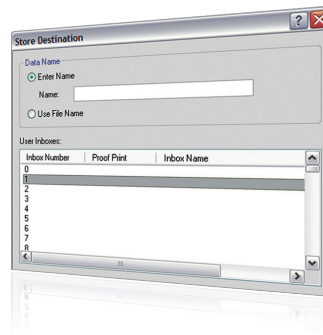
Each model in the imageRUNNER LBP Series can meet the advanced application requirements of industries, such as education and healthcare, through Adobe PostScript 3 and bar-coded printing. PostScript support delivers accurate rasterization of PostScript 3 print data; the Barcode Printing option ensures the accurate printing of bar codes.



Print driver interface

Document storage capabilities

Sometimes you need to quickly reprint a frequently used document. Canon makes it easy, as each printer model offers a convenient capability feature to store popular print jobs in different user boxes using the SD Card option. Up to 100 print jobs can be stored on the device and quickly printed from the Remote UI Web-based utility, without ever opening the original file or native application.

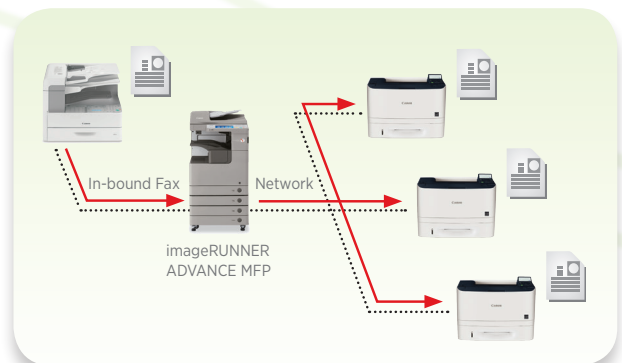


Mail box storage capability

Unleash new workflows with MFP integration

With the latest advances in output fleet integration from Canon, you can get even more value from your imageRUNNER ADVANCE MFP systems. Each imageRUNNER LBP Series model can receive and automatically print fax jobs routed from an imageRUNNER ADVANCE MFP with fax technology. This provides the convenience of personal or departmental fax delivery from a central MFP while also helping to reduce fax lines and expense. With Canon's pioneering MEAP technology embedded in each LBP model, businesses can now also leverage the workflows that previously could only be accessed from an imageRUNNER ADVANCE MFP. Solutions, such as uniFLOW Secure Print release for imageRUNNER LBP and Advanced Anywhere Print (AA-PRINT),** help extend the value and utility of your investment.

Fax Routing workflow



* The Macintosh environment is supported by the UFR II and PostScript 3 driver.

** Check with your Canon Authorized Dealer for availability.

An easy-to-use printer for every user

Front-load access

All models in the imageRUNNER LBP Series have been designed with front-load access to consumables for simple replacement. The Color imageRUNNER LBP5480 and imageRUNNER LBP3580/3480* models also include an innovative closing assist mechanism that helps shut the paper tray after it's been loaded.



Front-load access to toner cartridges on LBP5480

Simplified maintenance

The imageRUNNER LBP Series provides easy maintenance of customer-replaceable components. For the ultimate in convenience, each model in the Series uses all-in-one toner cartridges. The Color imageRUNNER LBP5480 model utilizes four cartridges that combine the drum, developer, and toners in a single unit, plus a distinctive auto-rewinding tape seal for easier installation. The imageRUNNER LBP3580/3480 models offer a convenient drum and black toner in one high-yield, easily replaceable all-in-one cartridge.



Intuitive User Interface (LBP5480 shown)

Impressive paper handling

All models in the Canon imageRUNNER LBP Series feature auto-duplexing capabilities to produce double-sided documents with nonstop productivity. The standard cassettes support a variety of paper types and sizes and offer even greater flexibility in media types with the standard Multi-Purpose Tray. For larger online paper capacities and multiple paper types, each model offers an option for additional cassettes.

No one likes printed pages to spill on the floor from an overfull output tray. That's why Canon built a sensor into every imageRUNNER LBP Series model to know when the tray is full. The system detects the level of pages, pauses printing when full, and then automatically resumes printing when the tray is emptied.

Large user interface and enhanced usability

Each model boasts a five-line LCD display for at-a-glance device status, consumable levels, job completion information, and animations to help guide users during setup and operation. Canon's easy-to-use Remote User Interface Web-based management tool is embedded as standard, and all models are fully compatible with the no-charge imageWARE Enterprise Management Console administration tool and an array of management plug-ins. All models also utilize electronic documentation with powerful search capabilities, so users won't have to waste time scanning through large printed manuals.



Superb paper handling (LBP3580 shown with optional Paper Feeder)

* The imageRUNNER LBP3480 model offers closing assist on the optional cassette only.

imageRUNNER LBP Series security...

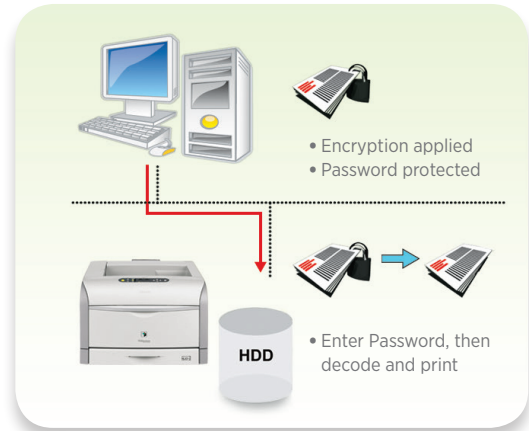
Document security

Each imageRUNNER LBP Series model offers the ability to protect printed documents with Secured Print and Encrypted Secured Print functions when the optional SD Card is installed. The print-driver-based Secured Print function stores documents on the device until the user-defined code is entered. For an added layer of security, the Encrypted Secured Print feature encrypts and password-protects documents before sending them to the printer over the network.

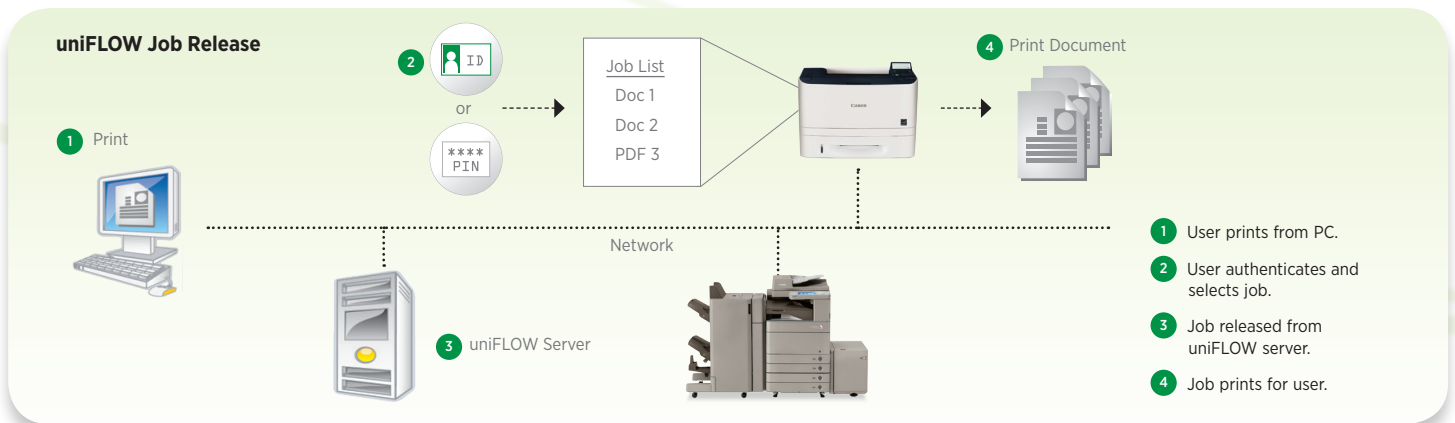
Canon's innovations further integrate the imageRUNNER LBP Series with a fleet of Canon MFPs to enhance document security and help reduce print waste via available secure print release solutions. AA-PRINT* provides print release from MFPs and LBP printers with minimal setup and no server required. It also controls access to your MFPs. Canon's uniFLOW suite** offers a Secured Print module for a highly scalable solution that can include job tracking and advanced, highly flexible job release methods on any device on your network. And both solutions easily integrate with an existing Active Directory for role management.

Data security

With no hard disk used by the system, the risk of information leak from latent data is significantly reduced. Data is instantly erased from memory when the device is powered off including Secured Print data stored to the optional SD Card. Enhanced network infrastructure management is also achieved through support for IP Address Range Filtering, MAC Address Filtering, SNMPv3, IPv6, SSL encryption, and IEEE 802.1x network security.



Encrypted Secured Print



* AA-PRINT requires optional MEAP client and at least one imageRUNNER ADVANCE MFP with Advanced Box.

** Supported via optional MEAP client. uniFLOW server software required.

Note: Canon Canada does not provide legal counsel or regulatory compliance consultancy. Each customer must have its own qualified legal counsel determine advisability of a particular solution as it relates to regulatory and statutory compliance.

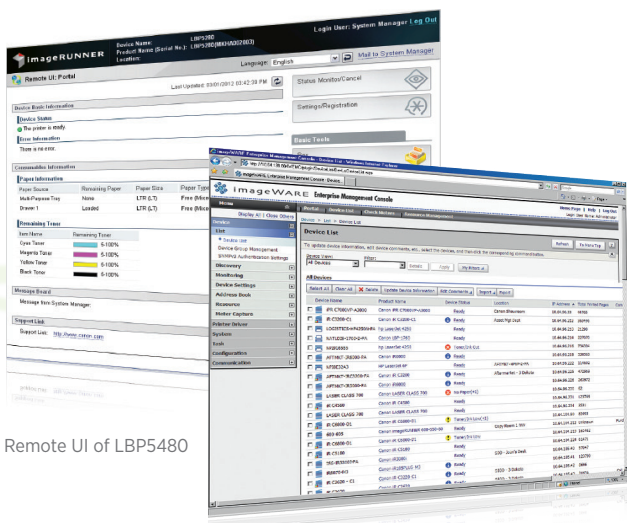
...and administration features

Optimized for fleets

Whether you're administering devices in local offices or remote locations, Canon's robust management tools make it possible to streamline complex environments. Canon imageWARE EMC is a scalable, Web-based utility that facilitates centralized management of Canon's single/multifunction models and other-branded devices. Built on an extensible framework, it enables remote management of device settings, discovery of new devices using automated tasks, and tiered device error notifications via e-mail. Administrators can also automatically push settings to devices and print drivers to PC-based desktop computers for rapid deployment. Standard on each model in the imageRUNNER LBP Series, Canon's innovative Content Delivery System (CDS) allows for remote upgrades of firmware and applications to help prevent business interruption, while standard support for the imageWARE Remote e-maintenance solution lets your Canon Authorized Dealer receive automated status and service alerts for the highest levels of service and uptime.

Remote UI

The standard Remote UI utility gives users the ability to check device status, track current job progress, monitor paper and toner levels, and administer document storage boxes on a Canon imageRUNNER LBP Series device through a Web browser, all from any computer on the network.

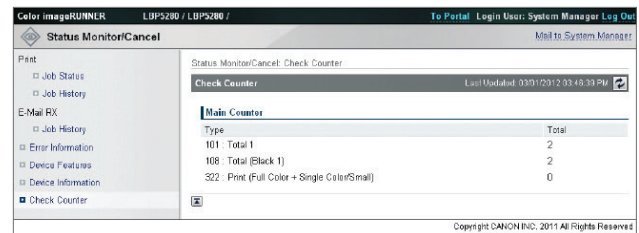


Remote UI of LBP5480

imageWARE Enterprise Management Console

Accurate and automated usage accounting

Each LBP model provides administrators with the ability to monitor total device output through the same counter system technology found in imageRUNNER ADVANCE MFP devices. Reports can be easily printed from the device's control panel or accessed via the network with Remote UI or imageWARE EMC, including the available Accounting Manager Plug-in. Canon's uniFLOW software suite takes print management to the next level with extensive tracking, routing, authentication, and reporting capabilities. The imageRUNNER LBP models have been designed to fully support imageWARE Remote to proactively and securely relay status, report device usage, and even remotely update firmware, saving your business valuable time and resources.



Counter totals in Remote UI

Protecting the world we share

A corporate philosophy of *Kyosei*—to live and work together for the common good—guides Canon's commitment to protect our most precious resources: the world we share and the communities we serve. It permeates everything Canon does, from R&D and product manufacturing to marketing/sales and the product life cycle. An ISO 14001-certified manufacturer, Canon focuses on resource conservation and the elimination of hazardous substances and has earned recognition for producing some of the world's most energy-efficient document imaging products. Through conservation, recycling, and sustainability initiatives as well as social programs, Canon's global family brings you state-of-the-art business technology solutions while contributing to the prosperity of humanity and the protection of the world we share.

Main Unit

Type: Desktop Laser Printer
Printing Method Electrophoto Method (Color RAPID Fusing System)
Developing System Contact Developing System
Standard PDL UFR II, PCL5c/6, Adobe PostScript 3
Power Supply: 120-127V, 60Hz
Plug: NEMA 5-15P
Memory (RAM) Standard/Maximum 768MB RAM
CPU ARM11-528 MHz + ARM9-264 MHz
Interface Connections Shared 10Base-T/100Base-TX/1000Base-T (Device)
Other Interface USB Hi-Speed (Device) x1 USB Hi-Speed (Host) x2
User Interface LCD 22 Characters x 5 Lines, 8 LED Indicators, 12 Operation Keys
Print Speed (BW/Colour) Up to 33 ppm (Letter)
Warm-up Time 39 Seconds or Less
First-Print Time BW printing: 10.2 Seconds or Less Colour printing: 10.4 Seconds or Less
Resolution Print: UFR II, PCL 5c/6, PostScript 3: 600 x 600 dpi, 9600 dpi equivalent x 600 dpi Engine: 600 x 600 dpi Halftone: 256 Gradations (Continuous-Tone)
Print Drivers UFR II, PCL 5c/6, PostScript 3: Windows® (XP/Windows Vista®/Windows 7/Windows 8/Server 2003/Server 2008/Server 2008 R2/Small Business Server 2011/Server 2012), Windows Terminal Servers (Server 2003/Server 2008/Server 2008 R2/Small Business Server 2011, Server 2012), Microsoft® Failover Cluster (Server 2003/Server 2008/Server 2008 R2), Citrix (Presentation Server 4.5, XenApp 5.0/6.0/6.5, XenDesktop 4.0/5.0/5.5/5.6), Macintosh® (OS X 10.5.8 or later) (UFR II/ PostScript 3 only), VMware (vSphere 4, 5), SAP (PCL 5c/6, PostScript 3 only)

Dimensions (H x W x D) 15-7/8" x 20-3/8" x 20-7/8" (400.8mm x 517mm x 530mm)
Installation Space (W x D) 32-7/8" x 33-5/8" (400.8mm x 833mm x 853mm) (With right cover of the Paper Feeder open)
Weight: Approx. 68.3 lb. (31.0 kg)*
Power Consumption (Approx., Average) Operating: 605W Standby: 36W Deep Sleep Mode: 1W
Paper Sources Standard: 500-sheet Paper Cassette (20 lb. Bond) 100-sheet Multi-Purpose Tray Optional: 500-sheet Paper Cassette Maximum: 1,100 Sheets
Paper Sizes Drawer: Standard Sizes: Letter, Executive,** Statement Custom Sizes: In case of portrait orientation (only when the UFR II printer driver is used): Short edges 5-7/8" to 8-1/2"; Long edges 5-7/8" to 8-1/2" In case of landscape orientation: Short edges 4" to 8-1/2"***; Long edges 5-7/8" to 11-5/8"*** Drawer: Standard Sizes: Legal, Letter, Executive, Foolscap, and 16K Custom Sizes: In case of portrait orientation (only when the UFR II printer driver is used): Short edges 8-1/4" to 8-1/2"; Long edges 8-1/4" to 8-1/2" In case of landscape orientation: Short edges 5-7/8" to 8-1/2"; Long edges 8-1/4" to 14"

Multi-Purpose Tray Standard Sizes: Legal, Letter, Executive, Statement, Foolscap, 16K, Index Card, Envelope (DL, No. 10, ISO-C5, and Monarch) Custom Sizes: In case of portrait orientation (only when the UFR II printer driver is used): Short edges 5" to 8-1/2"; Long edges 5" to 8-1/2" In case of landscape orientation: Short edges 3" to 8-1/2"; Long edges 5" to 14" Maximum Size: Legal (8-1/2" x 14")
Paper Weight Cassette: 16 lb. Bond to 43 lb. Bond (60 - 163 g/m ²) Multi-Purpose Tray: 16 lb. Bond to 80 lb. Cover (60 - 216 g/m ²) Optional Cassette: 16 lb. Bond to 47 lb. Bond (60 - 176 g/m ²)
Paper Handling Paper Output: Face-down Output Capacity: Face-down Output Tray: Approx. 250 sheets Duplexing: Standard Automatic Trayless Duplexing (Legal, Letter)
Toner (Estimated Yield)**** Black/Starter: 12,000 pages/6,100 pages C/M/Y: 6,400 pages

Paper Feeder Unit PF-723A[^]

Paper Sizes: Standard Sizes: Legal, Letter, Executive, Foolscap, and 16K Custom Sizes: In case of portrait orientation (only when the UFR II printer driver is used): Short edges 8-1/4" to 8-1/2," Long edges 8-1/4" to 8-1/2" In case of landscape orientation: Short edges 5-7/8" to 8-1/2;" Long edges 8-1/4" to 14"
Cassette Capacity: 500 Sheets (20 lb. Bond)
Dimensions (H x W x D) 6-3/8" x 20-1/4" x 20" (163mm x 514mm x 506mm)
Weight: Approx. 17.6 lb. (8 kg)
Other Optional Accessories • SD Card-B1 (8GB) • Barcode Printing Kit-F1 • Waste Toner Box WT-723: Approx. 18,000 Pages (When performing one-sided printing on Letter-sized paper) * Excluding the toner cartridges. ** When width is 8-1/2", max length is 11". *** When length is 11-5/8", max width is 8-1/4". **** Toner cartridge yield in accordance with ISO/IEC 19798. [^] One Paper Feeder can be added.

Main Unit

Type: Desktop Laser Printer
Printing Method Electrophoto Method (RAPID Fusing System)
Developing System Contact Developing System
Standard PDL UFR II, PCL 5e/6, Adobe PostScript 3
Power Supply: 120-127V, 60Hz Plug: NEMA 5-15P
Memory Standard/Maximum: 768MB RAM
CPU: ARM11-528MHz + ARM9-264MHz
Interface Connections Shared 10/100/1000Base-T (RJ-45)
Other Interface USB Hi-Speed (Device) x1 USB Hi-Speed (Host) x2
User Interface LCD 22 Characters x 5 Lines 8 LED Indicators 12 Operation Keys
Print Speed (BW) LBP3580: Up to 42 ppm (Letter) LBP3480: Up to 35 ppm (Letter)
Warm-up Time 28 Seconds or Less
First-Print Time LBP3580: 8.5 Seconds LBP3480: 7 Seconds or Less
Resolution Print: UFR II, PCL 5e/6, PostScript 3: 600 x 600 dpi, 1200 x 1200 dpi Equivalent, 2400 Equivalent x 600 dpi Engine: 600 x 600 dpi Halftone: 256 Gradations (Continuous-Tone)
Print Drivers UFR II, PCL 5e/6, PostScript 3: Windows® (XP/Windows Vista®/Windows 7/Windows 8/Server 2003/Server 2008/Server 2008 R2/Small Business Server 2011/Server 2012), Windows Terminal Servers (Server 2003/Server 2008/Server 2008 R2/Small Business Server 2011), Microsoft® Failover Cluster (Server 2003/Server 2008/Server 2008 R2), Citrix (Presentation Server 4.5, XenApp 5.0/6.0/6.5, XenDesktop 4.0/5.0/5.5/5.6), Macintosh® (OS X 10.5.8 or later), VMware (vSphere 4, 5), SAP (PCL 5e/6, PostScript 3 only)

Dimensions (H x W x D) LBP3580: 13-5/8" x 17-7/8" x 16-3/4" (345mm x 454mm x 424mm) LBP3480: 11-7/16" x 15-3/4" x 14-13/16" (289mm x 400mm x 376mm)
Installation Space (W x D) LBP3580: 17-7/8" x 28-1/4" (454mm x 622mm) (when Multi-Purpose Tray is extended) LBP3480: 15-3/4" x 23-7/8" (400mm X 605mm) (when Multi-Purpose Tray is extended)
Weight LBP3580: Approx. 36.6 lb. (16.6kg)* LBP3480: Approx. 25.6 lb. (11.6kg)*
Power Consumption (Approx., Average) Operating: LBP3580: 700W LBP3480: 550W Standby: LBP3580: 14W LBP3480: 14W Deep Sleep Mode: LBP3580: Approx. 0.9W LBP3480: 1W
Paper Sources Standard LBP3580: 500-sheet Paper Cassette (20 lb. Bond) 100-sheet Multi-Purpose Tray LBP3480: 250-sheet Paper Cassette (20 lb. Bond) 50-sheet Multi-Purpose Tray Optional LBP3580: 500-sheet Paper Cassette (Up to 2) LBP3480: 500-sheet Paper Cassette Maximum LBP3580: 1,600 Sheets LBP3480: 800 Sheets

Paper Sizes LBP3580 Cassettes: Legal, Letter, Executive, Custom Sizes (Width: 4-1/8" to 8-1/2"; Length: 5-7/8" to 14") Multi-Purpose Tray: Legal, Letter, Executive, Index Card, Custom Sizes (Width: 3" to 8-1/2"; Length: 5" to 14") and Envelopes Maximum Size: Legal (8-1/2" x 14") LBP3480 Cassettes: Legal, Letter, Executive and 16K, Custom Size (Width: 4-1/8" to 8-1/2"; Length: 5-7/8" to 14") Multi-Purpose Tray: Legal, Letter, Executive, and 16K, Custom Size (Width: 4-1/8" to 8-1/2"; Length: 5-7/8" to 14") and Envelope Maximum Size: Legal (8-1/2" x 14")
Paper Weight Cassettes: 16 lb. Bond to 32 lb. Bond (60 - 120 g/m ²) Multi-Purpose Tray LBP3580: 16 lb. Bond to 53 lb. Bond (60 - 199 g/m ²) LBP3480: 16 lb. Bond to 43 lb. Bond (60 - 163 g/m ²)
Paper Handling Paper Output: Face-down/Face-up Output Capacity LBP3580: Face-down Output Tray: Approx. 250 Sheets Face-up Output Slot: Approx. 50 Sheets LBP3480: Face-down Output Tray: Approx. 150 Sheets/1 Sheet Face-up Output Slot: 1 Sheet Duplexing: Standard Automatic Trayless Duplexing (Legal, Letter)

Toner (Estimated Yield)** Black (Starter) LBP3580: 6,000 Standard Pages LBP3480: 2,100 Standard Pages Black LBP3580: 12,500 Standard Pages LBP3480: 6,400 Standard Pages

Paper Feeder Unit PF-45 (for LBP3580)*** Paper Sizes: Legal, Letter, Executive, Statement, Custom Sizes (Width: 4-1/8" to 8-1/2" Length: 5-7/8" to 14") Cassette Capacity: 500 Sheets (20 lb. Bond)

Paper Feeder Unit PF-44 (for LBP3480)*** Paper Sizes: Legal, Letter, Executive, Custom Sizes (Width: 4" to 8-1/2"; Length: 5-13/16" to 14") Cassette Capacity: 500 Sheets (20 lb. Bond) Dimensions (H x W x D) 6-1/2" x 14-1/2" x 17-3/8" (166mm x 309mm x 441mm) Weight Approx. 9 lb. (4.1kg)

Other Optional Accessories • SD Card-B1 (8GB)* • Barcode Printing Kit-F1*

* Excluding the toner cartridges.
** Toner cartridge yield in accordance with ISO/IEC 19752.
*** Up to two Paper Feeders can be added to the LBP3580. One Paper Feeder can be added to the LBP3480.
* For both LBP printers.



As an ENERGY STAR® Partner, Canon U.S.A., Inc. has certified through an independent EPA-recognized accredited laboratory that this product meets the ENERGY STAR guidelines for energy efficiency. ENERGY STAR and the ENERGY STAR mark are registered U.S. marks. CANON, IMAGERUNNER, MEAP, and the GENUINE logo are registered trademarks of Canon Inc. in the United States and may also be registered trademarks or trademarks in other countries. IMAGEWARE is a trademark of Canon U.S.A., Inc. in the United States and is a trademark of Canon Inc. in certain other countries. Because It Counts is a trademark of Canon Canada. All other referenced product names and marks are trademarks of their respective owners and are hereby acknowledged. Some items may not be available at this time; please check for availability. Specifications and availability subject to change without notice.
©2013 Canon Canada Inc. All rights reserved.
Federal Law prohibits copying of certain documents. Violators may be subject to penalties. We suggest that you check with your own legal counsel. Canon U.S.A., Inc. and Canon Canada, Inc. intend to cooperate with Law Enforcement Agencies in connection with claims of unauthorized copying.



1-800-OK-CANON
www.canon.ca

