

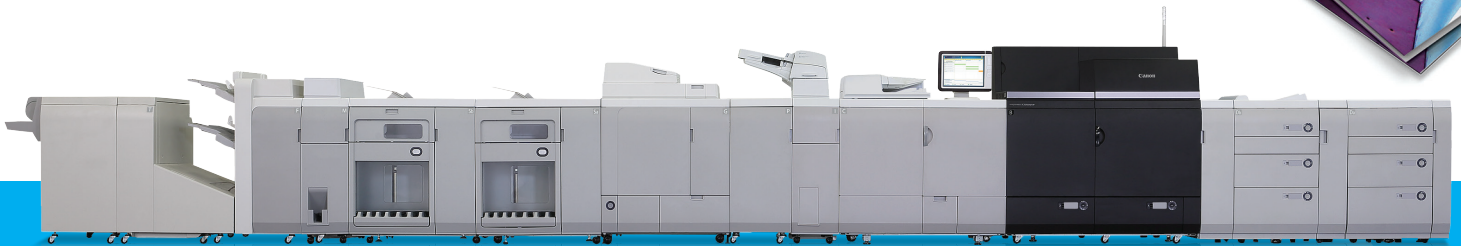
Canon

DIGITAL COLOUR
PRODUCTION PRESS



 **imagePRESS**
C10000VP / C8000VP

AMAZING PERFORMANCE FOR DIGITAL COLOUR PRODUCTION



PRODUCT AT-A-GLANCE

QUICK TURNAROUND TIMES

- Production speeds of up to 100 ipm (colour and B/W)
- Maintains rated speed on media up to 350 gsm
- High duty cycles of up to 1.5M sheets per month
- Up to 10,000-sheet feeding capacity

OUTSTANDING OUTPUT QUALITY

- Offset-like quality with 2400 x 2400 dpi print resolution and 190 lpi dot screen
- Precise calibration using In-line Spectrophotometric sensors
- Auto colour correction with Multi-D.A.T. technology
- Gloss Optimization

INCREASE RANGE OF APPLICATION OFFERING

- Versatile media handling
- Supports media from 60 gsm (uncoated) and 70 gsm (coated) up to 350 gsm
- Supports various specialties, including vellum, film, and synthetics
- Wide array of in-line feeding and finishing accessories

SEAMLESS WORKFLOW INTEGRATION

- Choice of workflows with latest versions of digital front-ends
- PRISMAsync Controller
- imagePRESS Server B5000 and B4000 powered by Fiery® technology with latest FS200 Pro Platform

imagePRESS C10000VP shown with optional accessories. Some accessories will become available after initial release.

DIGITAL COLOUR PRESS DELIVERS PRODUCTION EXCELLENCE FOR YOUR BUSINESS

A COMPETITIVE DIFFERENCE

The imagePRESS C10000VP Series can provide the edge you need to exceed your customers' expectations. It provides offset-like quality with 2400 x 2400 dpi output quality, tight registration, and stable colour on long runs at 100 letter impressions per minute. With dual fixing technology, it can maintain high throughput, even with mixed media and on long runs. The engine is designed for demanding production environments with monthly duty cycles of up to 1.5 million prints.

MORE APPLICATIONS

Offer customers a deeper range of applications on a wide range of smooth, textured, and synthetic substrates ranging from 60 to 350 gsm, with an air knife to aid handling of lighter-weight stocks. The imagePRESS C10000VP/C8000VP support versatile, in-line finishing options, including the new creasing feature and enhanced performance of the Professional Puncher.

POWERFUL PRODUCTIVITY

Gain outstanding productivity and great uptime with easy operator maintenance and simple replacement of long-life parts. Choose between three high-performance RIPs—the PRISMAsync Print Server and imagePRESS Server B4000 or B5000—all delivering great levels of advanced colour management and workflow integration to help give your business a behind-the-scenes, competitive advantage.

No matter the size or focus of your business, remaining competitive and providing more capabilities are essential for continued success. When selecting a technology partner, Canon's extensive print experience can help you tailor its solutions to help increase productivity and provide production excellence for your business.



imagePRESS FEATURES

QUALITY

- Gloss Optimization to help match the gloss levels of the paper
- Deliver high-quality output even on textured stock
- In-line spectrophotometric sensors and auto colour calibration for consistent output, run after run, with less effort
- Precise, front-to-back registration with active registration technology and digital compensation

PRODUCTIVITY

- Full-rated speed on media up to 350 gsm, uncoated or coated
- High performance even on long runs and mixed-media jobs
- Up to eight different paper sources with 10,000-sheet paper feed capacity enables long, unattended print jobs
- Powerful digital front-ends with latest platform help deliver high RIP performance

VERSATILITY

- Excellent media support
- Wide range of in-line finishing options for white-paper-in, finished-product-out
- New in-line creasing functionality for quality appearance of half-folded leaflets and saddle-stitched booklets
- Choice of workflows allows for integration into various types of environments

RELIABILITY

- Duty cycle of up to 1.5 million letter sheets per month
- Maximize uptime with user-replaceable parts and extensive key operator maintenance capability
- Reliable paper feed with air separation and vacuum-feed paper decks
- Ultrasonic multisheet detection to help prevent misfeeds

EXCELLENT QUALITY

ENGINEERED FOR DEMANDING PRODUCTION ENVIRONMENTS

190-DOT
for photos

190-DOT
for graphics

230-DOT
for text

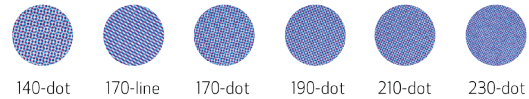
R-VCSEL

Infrared VCSEL **Red Laser VCSEL**

RED LASER TECHNOLOGY
With a shorter wavelength than infrared, red laser delivers 2400-dpi print quality.

OFFSET-LIKE QUALITY ON A DIGITAL PRESS

Today's customers expect excellent, offset-like print quality on every job. Print providers can set themselves apart by delivering printing that delights customers with outstanding image quality. The Canon imagePRESS C10000VP/C8000VP help provide smooth and vibrant output quality across a wide range of applications, including textured and synthetic substrates. CV toner and an Advanced Intermediate Transfer Belt combine to help provide efficient transfer to multiple media. Six flexible screen patterns include an offset-like, 190-lpi dot screen designed to satisfy varying image requirements.



TIGHT REGISTRATION TO HELP LIMIT REPRINTS

Registration is a subtle, yet crucial, indicator of print quality, and the human eye quickly picks up on even very small differences. The imagePRESS C10000VP Series uses active registration with a side guide to help correct for skew. To further enhance image-to-sheet registration accuracy, a second image transfer belt is used. Digital correction compensates for paper shrinkage when duplex printing.

Image-to-sheet registration can be controlled by operators for fine adjustment based on media used. Together, these features provide tight registration that helps produce "first-time-right" output that reduces misprints.

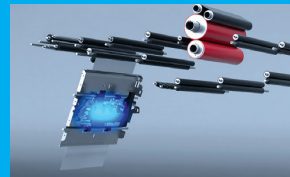
CONSISTENT COLOUR STABILITY TO HELP LIMIT WASTE

Customers expect colour to remain accurate throughout a long press run. The imagePRESS C10000VP Series is designed to help minimize the frustration and expense often associated with ensuring that colours are the same within and across print runs.

The imagePRESS C10000VP Series supports colour stability with technologies such as:

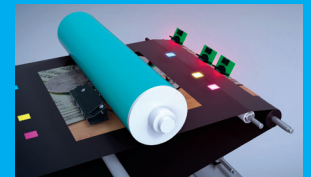
- CV toner
- Multi-D.A.T. automatic colour correction
- Post fusing calibration with in-line spectrophotometric sensor

ADVANCED COLOUR CONTROL



IN-LINE SPECTROPHOTOMETRIC SENSORS

Built-in spectrophotometric sensors for post fuse engine calibration measurements.



MULTI-D.A.T.

Multigradation patches will automatically be printed on the drum and ITB belt and read on the fly for real-time correction.

POWERFUL PRODUCTIVITY

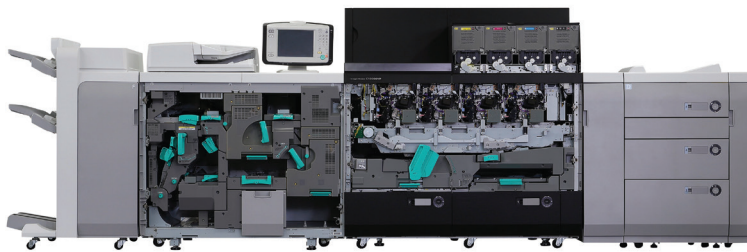
EVEN FOR LONG RUNS AND MIXED MEDIA

BUILT TO PERFORM

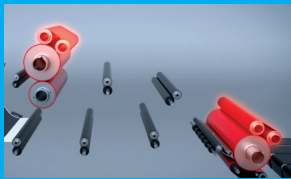
The imagePRESS C10000VP Series delivers excellent throughput at up to 100 letter-sized images per minute on substrates up to 350 gsm. But as any print provider knows, there's more to profitable productivity than mere speed. The entire press must integrate multiple technologies that are designed to deliver reliable performance. It's such integration that differentiates the imagePRESS C10000VP Series in the market and makes it a high-productivity performer for production print providers.

MINIMIZE DOWNTIME

To simplify operator maintenance¹, some operator-replaceable parts, such as the Primary Charging Assembly and Cleaning Web, can be changed without using tools to help reduce service calls and maintain uptime.



CUTTING-EDGE PRODUCTIVITY



DUAL FIXING

Automatically routes heavier stocks to a second fixing station. This enables full production speed, regardless of media weight and high productivity, even for long runs and mixed-media jobs.



EXTERNAL HEAT BELT

Maintains even temperatures and provides stable fixing at all print speeds, including continuous runs of heavier substrates.



AIR KNIFE

Helps to ensure that lightweight substrates are reliably separated from the fixing roller at full speed.



OPERATOR MAINTENANCE¹

Trained operators can perform maintenance and image adjustments, promoting maximum uptime and less unplanned maintenance.

¹contact your Canon Service Provider for availability

END-TO-END PERFORMANCE

The imagePRESS C10000VP and C8000VP incorporate features that can help your business grow by offering reliable performance and outstanding quality to help exceed your customers' expectations.



KEY FEATURES

FINISHING AND STACKING OPTIONS: ALL YOU EXPECT AND MORE

- 1 STAPLE AND SADDLE FINISHER**
Corner staple up to 100 sheets or saddle-stitch* up to 100-page booklets in paper sizes up to 13" x 19.2". An external side jogger helps keep paper in neat stacks. An optional 2/3-hole puncher is also available.
- 2 BOOKLET TRIMMING**
These modules work with the Saddle Finisher to produce professional, full-bleed booklets in-line.
SQUARE-FOLD BOOKLET-MAKERS**
Deliver professional-looking, lie-flat booklets with the speed and simplicity of in-line saddle-stitching.
- 3 PAPER FOLDING UNIT†**
Offer promotional pamphlets, brochures, and more with the ability to produce Z-fold, C-fold, accordion fold, and double-parallel fold documents.
- 4 HIGH-CAPACITY STACKER**
Realize maximum productivity with unload-while-run capability, helping to provide uninterrupted printing and virtually unlimited stacking.
- 5 PROFESSIONAL PUNCH DIE AND CREASE UNIT**
The Multifunction Professional Puncher handles a broad range of media sizes and weights, and it includes a creasing function that helps reduce paper or toner cracking on the spine.
- 6 PERFECT BINDER†**
Using hot glue, this module binds covers to book blocks of up to 400 pages and can trim on all three sides for full-bleed books or manuals.
- 7 DOCUMENT INSERTION UNIT†**
This module enables insertion of slip sheets or preprinted inserts and covers.

IMAGING: OFFSET-LIKE QUALITY

- 8 CV TONER**
With smooth particles and a low melting point, Canon's CV toner contributes to producing consistent and vibrant images on a wide variety of media and at full production speed.
- 9 GLOSS OPTIMIZATION**
A combination of toner characteristics and advanced fusing techniques minimizes deviations in gloss reflectance, so images closely match the gloss levels of the media used.
- 10 DEVELOPER UNIT**
A developer unit controls the developing agent to help maintain stable image quality, for colour consistency over long run jobs.

Input and bindery capacity is based on 20 lb. Bond paper.

* Available only on Saddle Finisher.

** Not shown.

† Not available for initial launch.



11 R-VCSEL LASER

A 32-beam R-VCSEL red laser delivers 2400 x 2400 dpi images for crisp, reliable output at full production speeds of up to 100 letter-sized pages per minute.

12 MULTI-D.A.T. FOR REAL-TIME CALIBRATION

Automatic, real-time colour correction delivers immediate feedback to the print engine to help maintain colour consistency throughout long print runs.

13 IN-LINE SPECTROPHOTOMETRIC SENSORS

Deliver accurate feedback to the print engine when performing engine calibration to help maintain colour consistency over time.

14 ACTIVE REGISTRATION

The combination of a second image transfer belt, in-track registration, a side guide, and a timing sensor help deliver accurate, front-to-back registration.

15 SIMPLE REGISTRATION

Operators can perform basic registration by simply scanning a test print chart.

16 DUAL FIXING

Two separate fixing stations allow the press to achieve maximum output speeds on all weight substrates while achieving gloss uniformity across the page.

17 ADVANCED IMAGE TRANSFER BELT

The special, elastic surface of the Advanced Image Transfer Belt helps ensure CV toner is completely transferred to smooth and textured surfaces at full-rated speed.

18 INTERNAL TEMPERATURE CONTROL

Internal airflow and temperatures are monitored and controlled to keep press temperatures stable and help ensure image quality and consistency over long production runs.

PAPER HANDLING: STAY PRODUCTIVE

19 INPUT AND CAPACITY

A 2,000-sheet input is standard, with the ability to scale up to 10,000 sheets. All trays accommodate all supported media weights. Suction feeding and air separation help provide accurate and reliable paper feeding.

20 ULTRASONIC MULTISHEET DETECTOR

This feature detects and diverts any multisheet feeds to the Escape Tray, designed to maintain throughput without jamming or stopping the press.

21 AIR KNIFE

A built-in air compressor powers an air knife to help ensure that lightweight substrates are reliably separated from the fixing roller in the first fixing station.

SIMPLIFIED WORKFLOW INTEGRATION



The PRISMAsync Print Server helps reduce costs while boosting production capacity.

MEDIA-BASED WORKFLOW

PRISMAsync has a media-based workflow that separates tasks and clarifies communications between prepress and production departments to help minimize errors, turnaround time, and waste.

PEOPLE-CENTRIC DESIGN

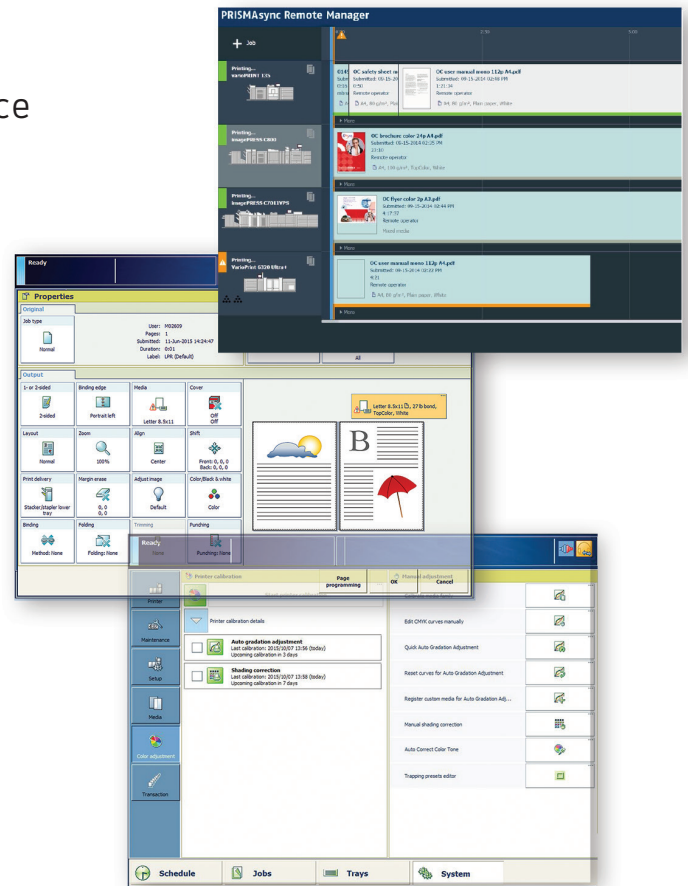
Tasks are made clear through a highly visual user interface with a common design throughout the entire suite of PRISMA workflow solutions. Consistent operation helps reduce mistakes and increases throughput.

PREDICTABLE PRODUCTION CONTROL

Accelerate turnaround times with up to eight hours of plan-ahead production with the Job Scheduler. The PRISMAsync controller can accurately predict production times and operator intervention requirements.

WORKFLOW INTEGRATION

PRISMAsync is powered by Adobe PDF Print Engine with Mercury RIP architecture and integrates with JDF and JMF tools to help streamline and accelerate processes, reduce costs, and help you manage and control your operations.



REMOTE MANAGER

PRISMAsync Remote Manager is a multipress scheduler and management console that provides greater control over your fleet of PRISMAsync-driven digital presses. This Web-based tool helps keep your presses running as continuously as possible—easily upload jobs, edit job properties, print and manipulate queues, and monitor your fleet from a remote workstation.*

INTELLIGENT COLOUR MANAGEMENT

PRISMAsync colour management system helps enable consistent, predictable output while facilitating qualitative adjustments. PRISMAsync incorporates an in-RIP G7 calibration method that lets print professionals quickly and easily calibrate their PRISMAsync-driven imagePRESS colour presses to achieve near neutral print conditions.** Also PRISMAsync allows discrete control over spot colours at one percent tint levels for accurate, consistent matching of RGB, and CMYK matching of PANTONE® four-colour simulations and corporate colours.

* The remote workstation must be connected to the same network as the digital press. An HTML 5-compatible Web browser with JavaScript and WebSocket support is required. See the PRISMAsync Remote Manager documentation for details.

** For requirements regarding G7 configuration, please consult an Authorized Canon Dealer.



imagePRESS SERVER B5000/B4000 POWERED BY FIERY® TECHNOLOGY

The new imagePRESS Server B5000/B4000 help efficiently deliver high-value jobs with outstanding colour.



EFI™ FIERY HYPERRIP

Simultaneously processes multiple jobs or a single job across up to four RIPs.



imagePRESS Server B5000 shown with options.

COLOUR CONTROL

The imagePRESS Servers include enhanced gradient smoothing and updated PANTONE® PLUS libraries for incorporating process-colour imaging that enables more accurate matching over a wider range of brand colours. Customized colour curves can be defined, applied, and saved at the individual page level and over a range of pages. And, in G7-certified environments, the imagePRESS Servers help match grey-balance targets.

PRODUCTIVITY

The new imagePRESS Server B5000 supports EFI Fiery HyperRIP, an advanced RIP technology that uses four parallel processors to boost RIPping performance on a single job or multiple jobs. And unexpected rush jobs can be moved to the top of the print queue and processed using a fifth RIP, without interrupting other jobs being processed.

INTEGRATION

The imagePRESS Servers are CIP4-certified JDF DFE that can seamlessly connect with other JDF-based devices. With it, users can establish fully automated, bi-directional communication and integration with EFI MIS/ERP and Web-to-print products. It also provides virtually seamless integration into environments with existing EFI Fiery workflows.

EASE OF USE

Both the imagePRESS Server B5000 and B4000 servers feature “unity display” that gives users the ability to switch between EFI™ Fiery Command WorkStation® workflow screens and the imagePRESS control panel. Operators gain convenient access to control the job queue and can easily select media, review job previews, and make print engine quality adjustments.

EXPAND YOUR CAPABILITIES

DO MORE FOR YOUR CUSTOMERS

THE FINISHING TOUCHES

From book covers to manuals to posters to fully bound books and manuals, the Canon imagePRESS C10000VP Series provides tools that can let you delight customers with print quality and finished products. A wide variety of in-line finishing options is available for the imagePRESS C10000VP Series, letting you meet a broad range of customer needs and effectively grow your business.

VERSATILE MEDIA HANDLING

The media versatility of the C10000VP Series extends from the press through finishing, enabling you to satisfy a broad range of customer requirements with a single machine. The digital press can accommodate media as light as 60 gsm (uncoated) and 70 gsm (coated), all the way up to 350 gsm. It prints standard sizes as well as long sheet applications—up to 30 inches—on one device. In addition, you can deliver high-quality output on textured substrates and specialty media, including vellum, film, and synthetics.



STAPLED DOCUMENTS

Produce stapled documents, such as presentation handouts, of up to 100 sheets, with both corner and double stapling capabilities.



SADDLE-STITCHED BOOKLETS

In-line saddle-stitching provides up to 100-page* brochures, catalogs, and programs. Square-fold options and unique Saddle Press technology* help to limit bowing, so booklets lie flat. Creasing feature is also available for high-quality half-folding and saddle-stitching that significantly reduces paper or toner cracking on the spine.



FULL-BLEED BOOKLETS

Print booklets in sizes of up to 13" x 19.2" and benefit from in-line, face- and two-knife trimming for high-quality, full-bleed booklet output.



PERFECT-BOUND BOOKS

Deliver soft-cover, glue-bound books of up to 400 pages in-line.



OFF-LINE FINISHING

Via the High-Capacity Stacker, the imagePRESS C10000VP/C8000VP presses output neat stacks of loose leaves that can be unloaded to feed your off-line, post-processing equipment—and all without interrupting print production.



BOUND PRESENTATIONS AND MANUALS

Standard or custom punch dies produce ready-to-bind documents for a variety of binding methods, such as plastic comb, velo bind, or colour coil binding, eliminating the need for prepunched sheets or off-line hole punching.



FOLDED BROCHURES

Produce flyers, mailings, letters, and folded leaflets in-line with the folding unit.

Binding capacity is based on 20 lb. Bond paper.

* Requires Saddle Finisher-AN2.

TARGET GROWTH

RELIABLE PRODUCTIVITY FOR YOUR BUSINESS

Engineered for demanding production environments, the imagePRESS C10000VP Series is built for high productivity and reliability in commercial print shops, in-plant operations, and at transactional and direct mail service providers. Its vibrant, stable output is ideally suited for applications including:

- Collateral and brochures
- Business cards and postcards
- Direct mail
- Transactional documents
- Books and manuals



LEARN FROM EXPERIENCE

TEAMING WITH CANON

A COMPETITIVE ADVANTAGE

We'll help you increase productivity and improve your bottom line. Our extensive print experience translates to deep insight into industry characteristics and trends as well as customer goals and challenges. Canon's understanding of various printing markets allows us to tailor solutions to meet your specific needs.

TOTAL SOLUTIONS

The Canon portfolio of technology offerings is among the broadest in the industry. From digital, sheet-fed, web-fed, and wide-format systems to inkjet, photo printers, and workflow solutions, Canon has a customized solution for your business.



SPECIFICATIONS

MARKING ENGINE

Technology:	Electrophotography
Resolution:	Up to 2400 x 2400 dpi
Halftones:	256-Level Greyscale
Max. Print Speed (IPM) (regardless of media weight)	Simplex/Duplex C10000VP C8000VP
8.5" x 11":	100 80
11" x 17":	56.2 43.1
12" x 18":	53.5 40.9
13" x 19":	51 38.9
Paper Size:	7.2" x 7.2" to 13" x 19.2" (Engine Cassette)
Paper Feeding	
Engine Cassette:	Up to 2,000 Sheets (20 lb. Bond)
Maximum:	Up to 10,000 Sheets (20 lb. Bond)
Paper Weight:	16 lb. Bond to 130 lb. Cover (60 gsm to 350 gsm)
Duplexing:	Automatic Duplex Any Supported Stock
Power Source:	3-Phase 208V/30A 1-Phase 208V/20A
Dimensions (H x W x D):	57.3" x 101.8" x 45.4"

INPUT ACCESSORIES

POD Deck-D1

Paper Capacity:	Up to 4,000 Sheets (20 lb. Bond)
Paper Size:	7.2" x 7.2" to 13" x 19.2"
Paper Weight:	16 lb. Bond to 130 lb. Cover (60 gsm to 350 gsm)
Dimensions (H x W x D):	43.1" x 38.7" x 31.2"
Power Source:	208V/15A

Secondary POD Deck-D1

Paper Capacity:	Up to 4,000 Sheets (20 lb. Bond)
Paper Size:	7.2" x 7.2" to 13" x 19.2"
Paper Weight:	16 lb. Bond to 130 lb. Cover (60 gsm to 350 gsm)
Dimensions (H x W x D):	43.1" x 31.9" x 31.2"
Power Source:	From POD Deck-D1

POD Deck Lite-C1

Paper Capacity:	Up to 3,500 Sheets (20 lb. Bond)
Paper Size:	Statement to 13" x 19.2"
Paper Weight:	16 lb. Bond to 130 lb. Cover (60 gsm to 350 gsm)
Dimensions (H x W x D):	22.4" x 25.8" x 27.0"

Duplex Image Reader-K1

Image Sensor:	CCD
Document Size:	Statement to 11" x 17"
Resolution:	Up to 600 x 600 dpi, 256 Gradations
Tray Capacity:	Up to 300 Sheets (20 lb. Bond)
Scanning Speed:	Up to 300 dpi Up to 600 dpi
BW (duplex):	Up to 200 Up to 120
Colour (duplex):	Up to 140 Up to 70

FINISHING ACCESSORIES

Multifunction Professional Puncher-A1

Original Size:	12" x 18", 11" x 17", LTR, LGL, LTR-R, STMT
Paper Weight	
Plain:	20 lb. Bond to 110 lb. Cover (75 gsm to 300 gsm)
Coated:	20 lb. Bond to 110 lb. Cover (80 gsm to 300 gsm)
Die Set Patterns:	Loose Leaf 3-Hole/5-Hole, Velo Bind 11-Hole, Plastic Comb 19-Hole, Twin Loop 21-Hole/32-Hole, Colour Coil 44-Hole, Crease*

Dimensions (H x W x D):	40.9" x 17.5" x 31.2"
Power Supply:	120V/15A

High-Capacity Stacker-H1

Offset Stack Capacity:	Up to 6,000 Sheets (20 lb. Bond)
Top Tray Capacity:	Up to 200 Sheets (20 lb. Bond)
Paper Size:	7.2" x 7.2" to 13" x 19.2"
Paper Weight:	16 lb. Bond to 130 lb. Cover (60 gsm to 350 gsm)
Max. Connectivity:	2 Units

Dimensions (H x W x D):	40.9" x 35.4" x 29.3"
Power Source:	120V/15A

Finisher-AN1/Saddle Finisher-AN2

Tray Capacity	
Top Tray:	Up to 1,000 Sheets (20 lb. Bond)
Lower Tray:	Up to 4,000 Sheets (20 lb. Bond)
Saddle-Stitch Tray:	Up to 30 Booklets or Limitless
Staple Positions:	Corner Stapling, Double Stapling
Paper Weight:	16 lb. Bond to 130 lb. Cover (60 gsm to 350 gsm) For saddle-stitch, up to 110 lb. Cover (300 gsm)

Paper Size	
Stapling:	11" x 17", LGL, LTR-R, EXEC, LTR, 12" x 18", 13" x 19.2", Custom Size (8.3" x 11" to 13" x 19.2")
Saddle-Stitch Finisher:	11" x 17", LGL, LTR-R, 12" x 18", 13" x 19", Custom Size (8.3" x 11" to 13" x 19.2")

Stapling Capacity: Up to 100 Sheets

Saddle-Stitching Capacity

Uncoated:	Up to 25 Sheets
Coated:	Up to 10 Sheets
V-Folding:	Up to 5 Sheets without Stitch (20 lb. Bond)

Dimensions (H x W x D):	AN1: 46.5" x 35.0" x 31.2" AN2: 46.5" x 41.7" x 31.2"
-----------------------------------	--

Power Source: 120V/15A

Perfect Binder-E1

Cutting Method:	3-Side Cut/1-Side Cut/No Cut
Finished Book Size:	5.4" x 7.99" to 8.5" x 11.69"
Book Thickness:	10 to 200 Sheets (20 lb. Bond) (up to 0.98")

Body Paper Weight: 16 lb. Bond to 43 lb. Bond
(60 gsm to 163 gsm)

Cover Paper Weight: 28 lb. Bond to 110 lb. Cover
(91 gsm to 300 gsm)

Trim Range	
Top/Bottom:	.26" to 1.56"
Side:	.26" to 1.95"

Dimensions (H x W x D):	53.5" x 36.3" x 31.1"
Power Source:	208V/15A

Booklet Trimmer-D1†

Margin Trimming:	Front Edge
Trim Amount:	0.08" to 0.78"
Trim Thickness:	50 Sheets
Paper Weight:	16 lb. Bond to 110 lb. Cover (60 gsm to 300 gsm)

Output Tray Capacity:	30 Booklets
Dimensions (H x W x D):	40.9" x 62.1" x 30.3"

Two-Knife Booklet Trimmer-A1††

Margin Trimming:	Top and Bottom
Trim Amount:	0.08" to 0.59"
Trim Thickness:	50 Sheets
Paper Weight:	16 lb. Bond to 110 lb. Cover (60 gsm to 300 gsm)

Dimensions (H x W x D):	40.9" x 21.1" x 30.3"
Power Supply:	120V/15A

Puncher Unit-BS1

(Option for Finisher/Saddle Finisher)

Paper Weight: 16 lb. Bond to 110 lb. Bond
(60 gsm to 200 gsm)

Paper Sizes	
2-Hole:	LTR-R, LGL, Custom Size (7.2" x 7.2" to 11.7" x 17")
3-Hole:	11" x 17", LTR, Custom Size (7.2" x 7.2" to 11.7" x 17")

Document Insertion Unit-N1

Tray Capacity	
Upper Tray:	200 Sheets
Lower Tray:	200 Sheets
Paper Weight:	16 lb. Bond to 110 lb. Cover (60gsm to 300gsm)
Paper Size:	11" x 17", 12" x 18", 13" x 19", LGL, LTR, LTR-R, EXEC, Custom Size (7.2" x 7.2" to 13" x 19.2")

* Not available at initial launch.

† Must connect to Saddle Finisher-A1J2.

†† Must connect to Booklet Trimmer-D1.

 WWW.CANON.CA



The imagePRESS C10000VP/C8000VP models contain multiple components, some of which are manufactured by third parties. Accordingly, Canon makes no representations or warranties with respect to such third-party products. For additional information on any Canon or third-party accessories, contact your Canon representative.

Canon, imagePRESS, and the GENUINE logo are registered trademarks of Canon Inc. in Canada and may also be registered trademarks or trademarks in other countries. All other referenced product names and marks are trademarks of their respective owners. Specifications and availability subject to change without notice. All printer output images are simulated.

Federal Law prohibits copying of certain documents. Violators may be subject to penalties. We suggest that you check with your own legal counsel. Canon U.S.A., Inc. and Canon Canada, Inc. intend to cooperate with Law Enforcement Agencies in connection with claims on unauthorized copying.

©2016 Canon Canada, Inc. All rights reserved.

XXXXXX

